
7694 Manifold Assembly

	Description	HP Part No.	Qty
1	Zero dead volume union	325-045-HSP	1
2	Needle-assembly	301 -01 3-HSP	1
	Needle-assembly Silcosteel	301 -220-HSP	
3	Heater, element 50W	420-045-HSP	2
4	Sensor, temperature PT 1 00	435-001 -HSP	1
5	Needle holder	301 -043-HSP	1
6	Body, manifold	301 -039-HSP	1
7	Washer, fiberglass	300-493-HSP	1
8	Loop mandrel	301 -091 -HSP	1
9	Loop, sampling 1 cc Ni, or	321 -055-HSP	1
	Loop, sampling 3 cc Ni, or	321 -056-HSP	
	Loop, sampling 1 cc Silcosteel, or	321 -058-HSP	
	Loop, sampling 3 cc Silcosteel	321 -059-HSP	
1 0	Six-port valve	366-1 02-HSP	1
1 1	Spring, pull out needle	301 -042-HSP	1
1 2	Disk, needle guide	641 -0204050-HSP	1
1 3	Circlip SS	301 -040-HSP	1
	Associated screws		
A	Screw, M3 X 1 0 pan head	051 5-0925	2
B	Screw, M4 X 1 6 hexagonal head	300-840-HSP	1
C	Screw, M4 X 1 2 socket head cap	051 5-1 1 96	1
D	Washer, D3 toothed	21 90-0638	2
E	Washer, D3 flat	3050-0891	2

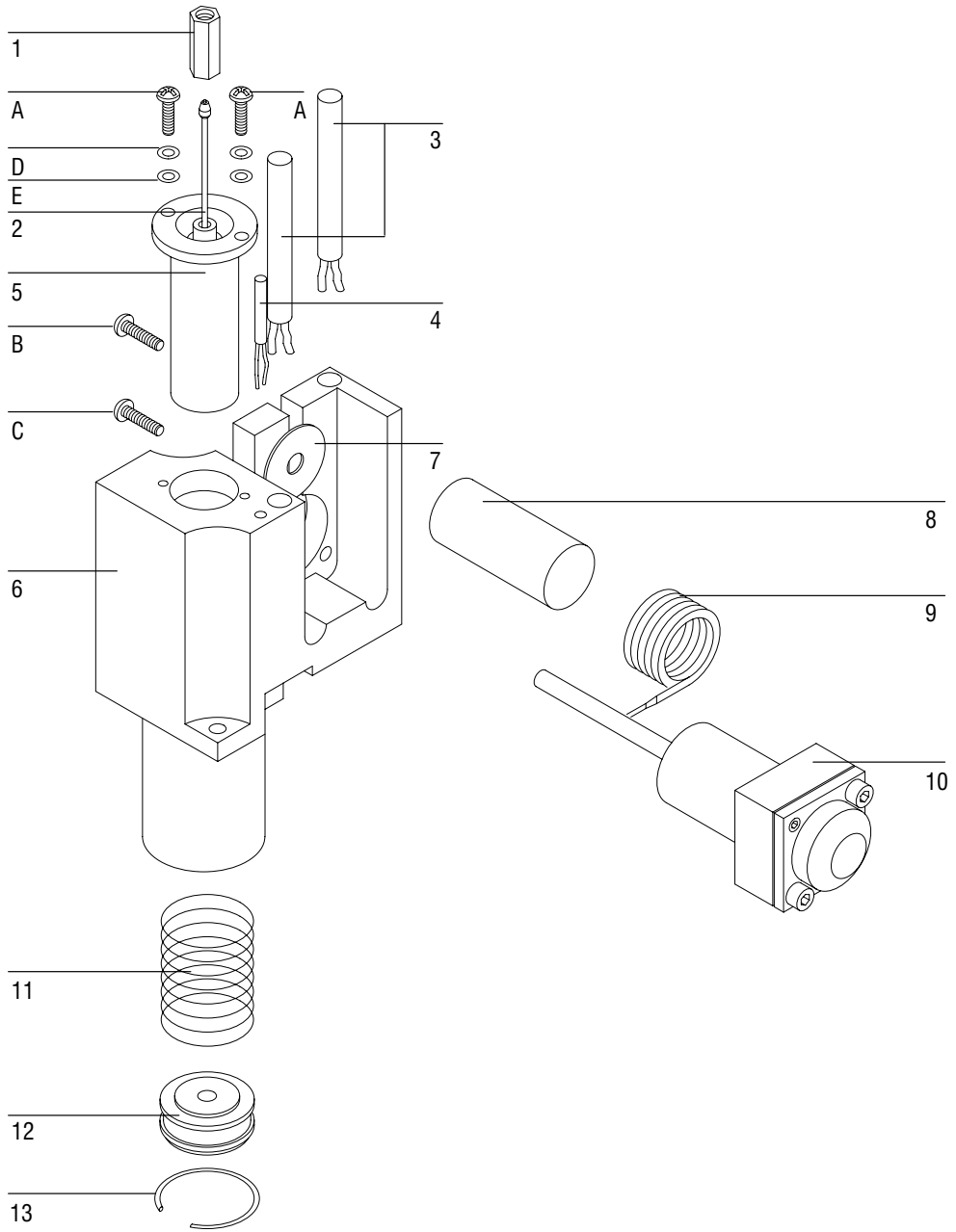


Figure 5-8. Manifold Assembly